



# Florida's Turnpike Enterprise

Miami-Dade County

Master Plan Project List Update

June 2018





# Agenda

- Florida's Turnpike Enterprise
- Current Initiatives
  - CCSS
  - SunTrax
  - Truck Platooning Pilot
- Master Plan Projects
  - Ongoing Projects
  - Funded Projects – FY 2018 – FY 2027
  - Unfunded Projects

# Florida's Turnpike Enterprise



## The Tolling Arm of FDOT



**616**  
toll lane miles

+

**138**  
interchanges

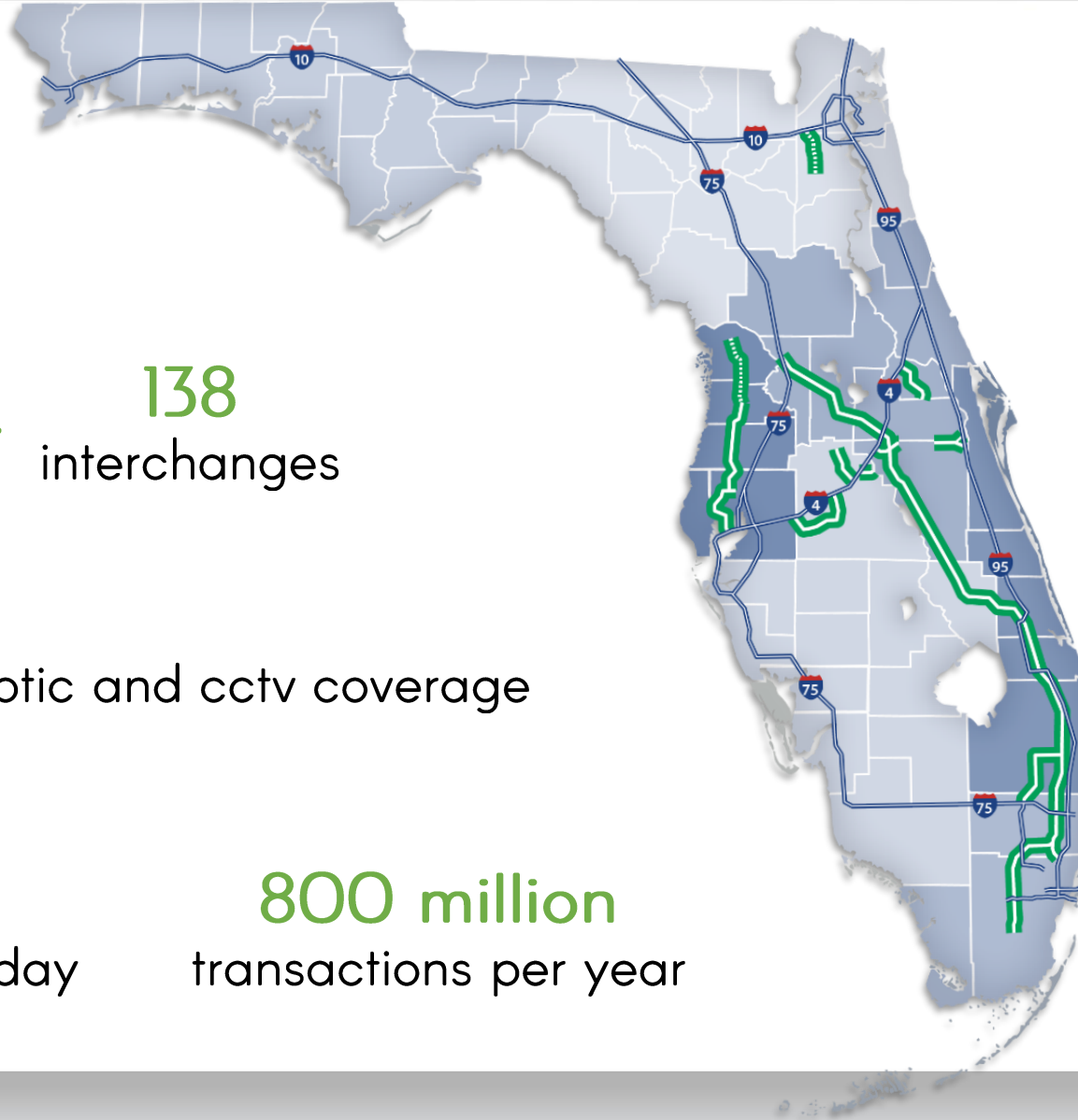


complete fiber optic and cctv coverage



**2.3 million**  
transactions per day

**800 million**  
transactions per year



## FTE's Interests in Transportation 2.0

- Plan Infrastructure Investments
- Continue to Lead in Tolling

# Current Initiatives

## Centralized Customer Service System (CCSS)

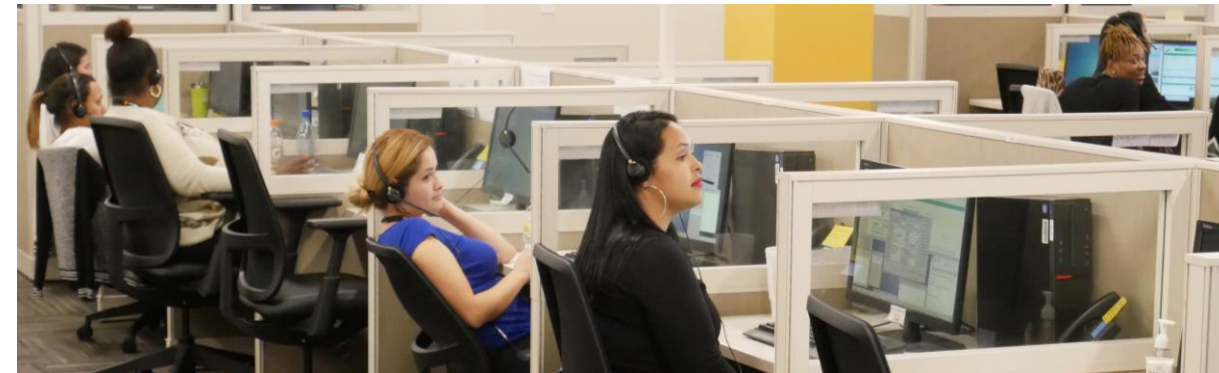


- Goal is to operate a consolidated back-office system, i.e., a centralized location for the processing of toll payments from multiple toll agencies

- Partners



- Benefits
  - Reduced costs
  - Increased operational efficiencies
  - Improved customer experience
- Timeline ~ Summer 2018

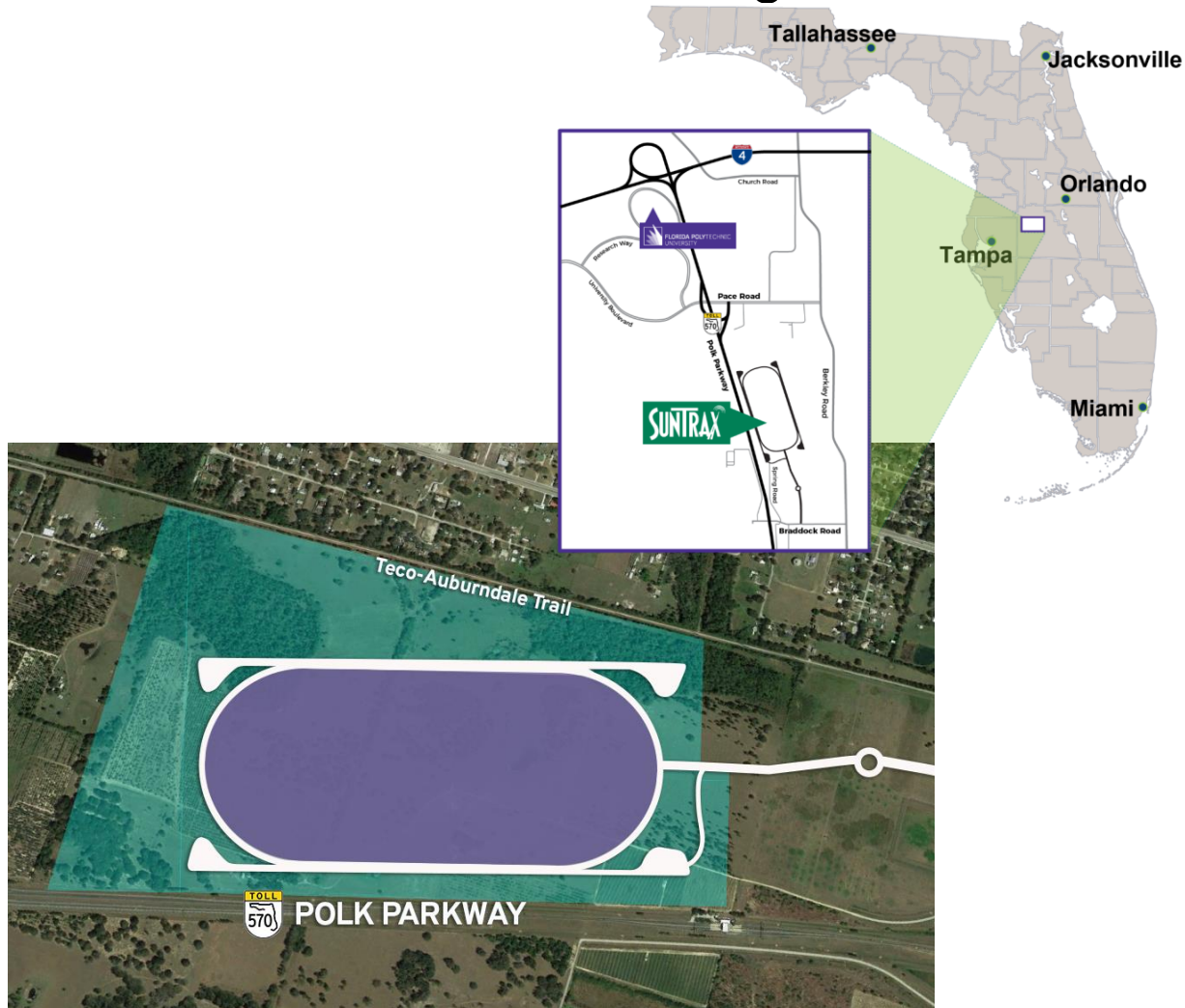




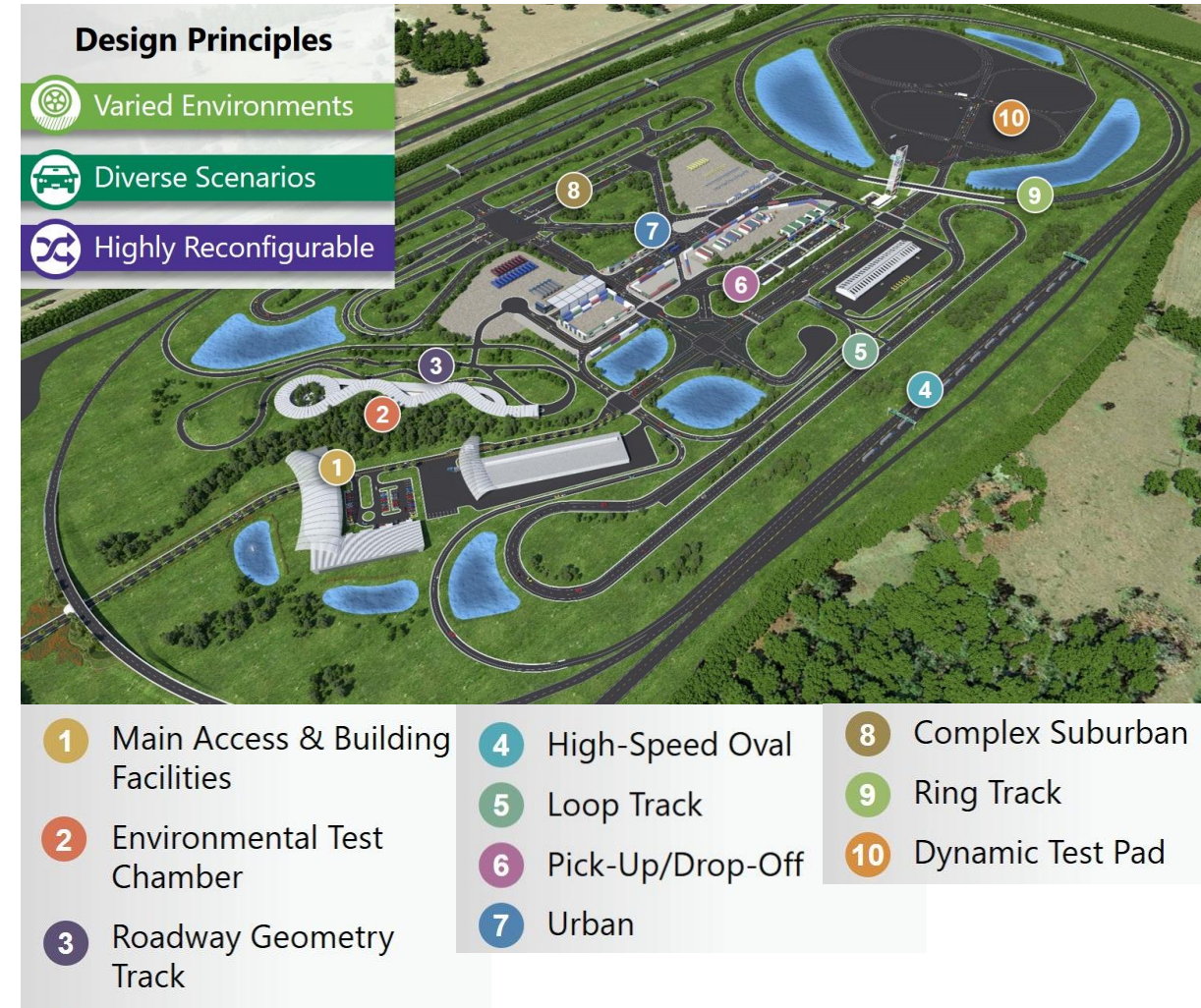
# Current Initiatives



## Phase 1 – Toll Testing Facilities

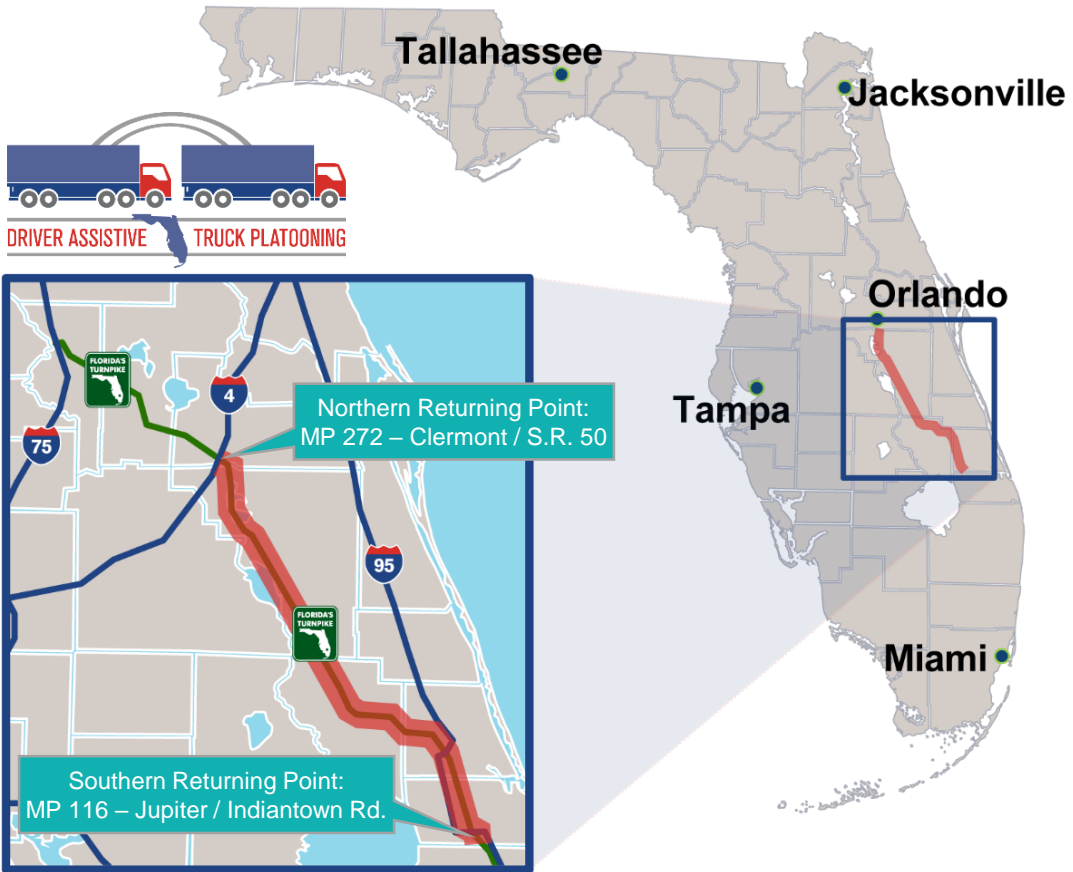


## Phase 2 – Infield





# Current Initiatives



# Master Plan

- Identifies major capital improvement projects for FTE, e.g., improvement and expansion projects
  - Programmed/planned projects
  - Unfunded needs projects
- Last Master Plan was completed in 2016 for a FY 2016–2045 timeframe
- 2018 project list update





# Ongoing Projects Under Construction

MP 23 - SW 40<sup>th</sup> St / Bird Rd ↔ MP 26 - Dolphin Expwy / SR 836  
Widen with express lanes | \$112M

Sunset Dr / SR 986 ↔ MP 23 - SW 40<sup>th</sup> St / Bird Rd  
Widen with express lanes | \$54M

SW 104<sup>th</sup> St / Killian Pkwy ↔ Sunset Dr / SR 986  
Widen with express lanes | \$74M

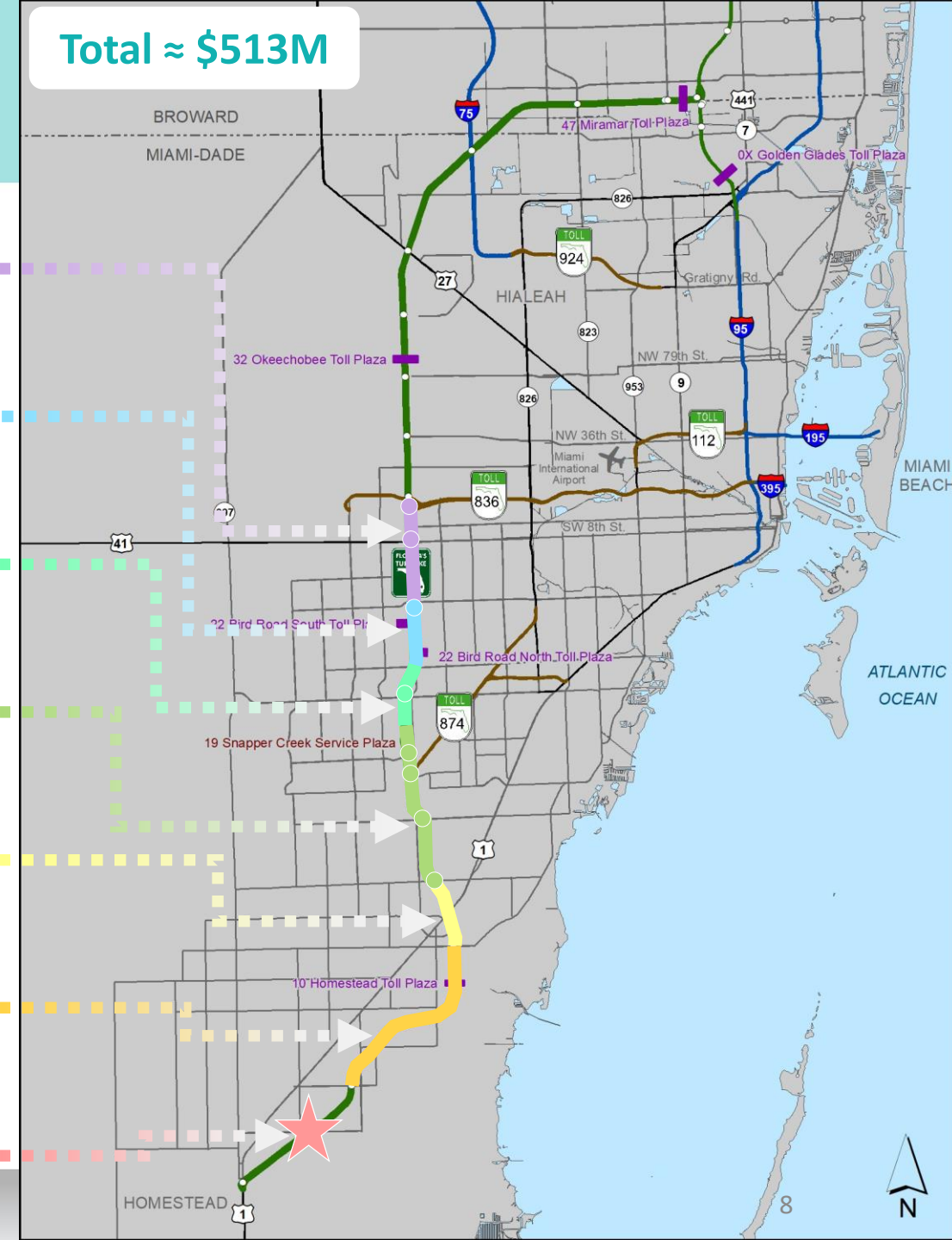
MP 13 - SW 184<sup>th</sup> St / Eureka Dr ↔ SW 104<sup>th</sup> St / Killian Pkwy  
Widen with express lanes | \$145M

MP 11 - SW 216<sup>th</sup> St ↔ MP 13 - SW 184<sup>th</sup> St / Eureka Dr  
Widen with express lanes | \$43M

MP 5 - SW 288<sup>th</sup> St / Biscayne Dr ↔ MP 11 - SW 216<sup>th</sup> St  
Widen with express lanes | \$70M

MP 2 - SW 312<sup>th</sup> St / Campbell Drive  
Interchange improvements | \$15M

Total ≈ \$513M

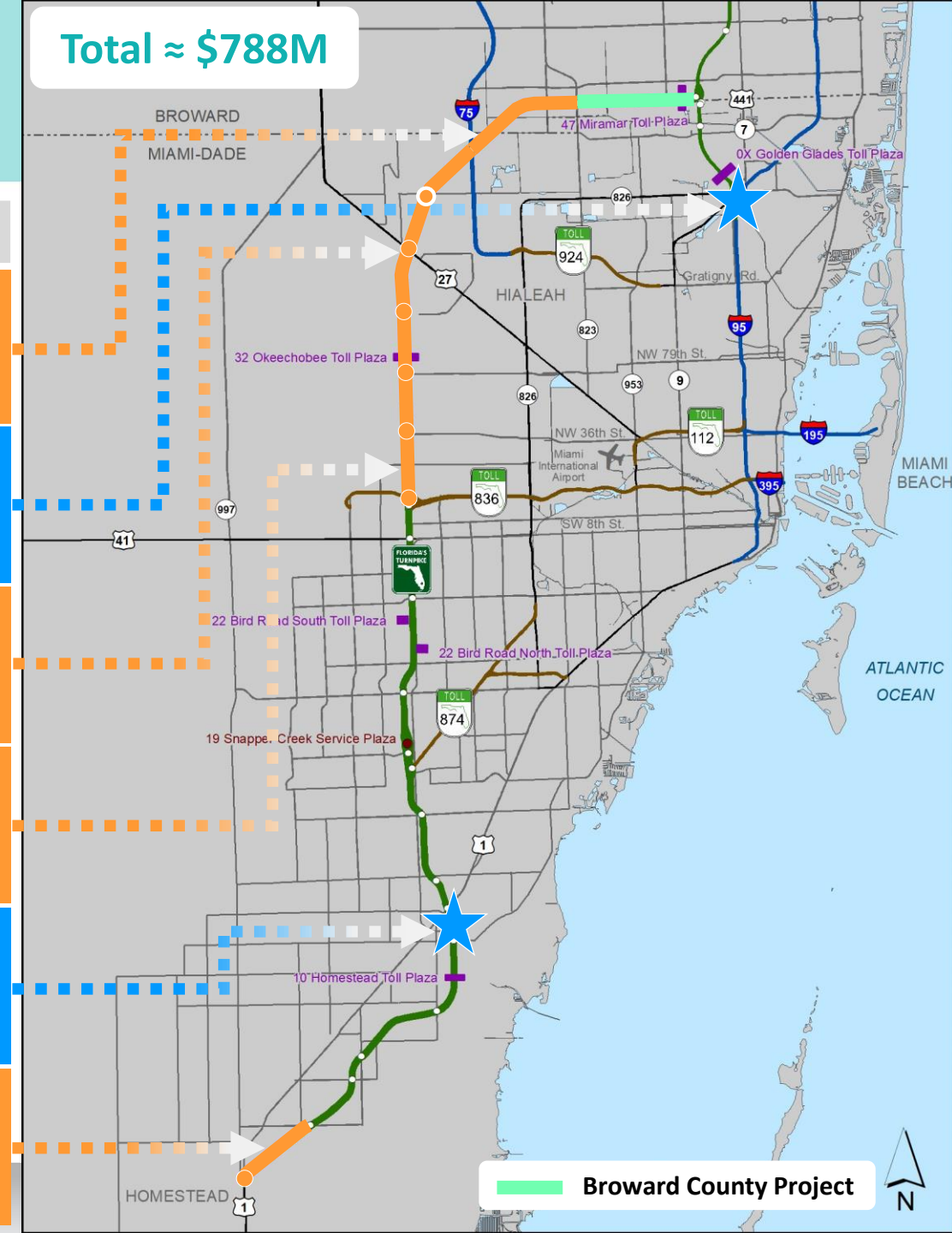




# Funded Projects FY 18 to FY 27

Facility	Description	Phase	FY	Cost (\$M)
SR 821	Widen between MP 39 - I-75 and MP 43 - NW 57 <sup>th</sup> Ave [FPN: 435546-1]	CST	2018	\$80
SR 91	Interchange improvements at MP 0X - I-95 / Golden Glades (Spur) [FPN: 437053-1,-3,-5]	PE CST	2018 2021	\$199
SR 821	Widen between MP 34 - NW 106 <sup>th</sup> St and MP 39 - I-75 (w/ NW 170 <sup>th</sup> St IC) [FPN: 435542-1]	PE CST	2018 2019	\$189
SR 821	Widen between MP 26 - Dolphin Expwy/ SR 836 and MP 34 - NW 106 <sup>th</sup> St [FPN: 435543-1]	PE CST	2018 2019	\$230
SR 821	Interchange improvements at MP 12 - SW 211 <sup>th</sup> St / Caribbean Blvd [FPN: 437211-1]	PE CST	2018 2020	\$28
SR 821	Widen between MP 0 - US 1 and MP 2 - SW 312 <sup>th</sup> St / Campbell Dr [FPN: 439545-1]	PDE PE CST	2018 2022 2024	\$62

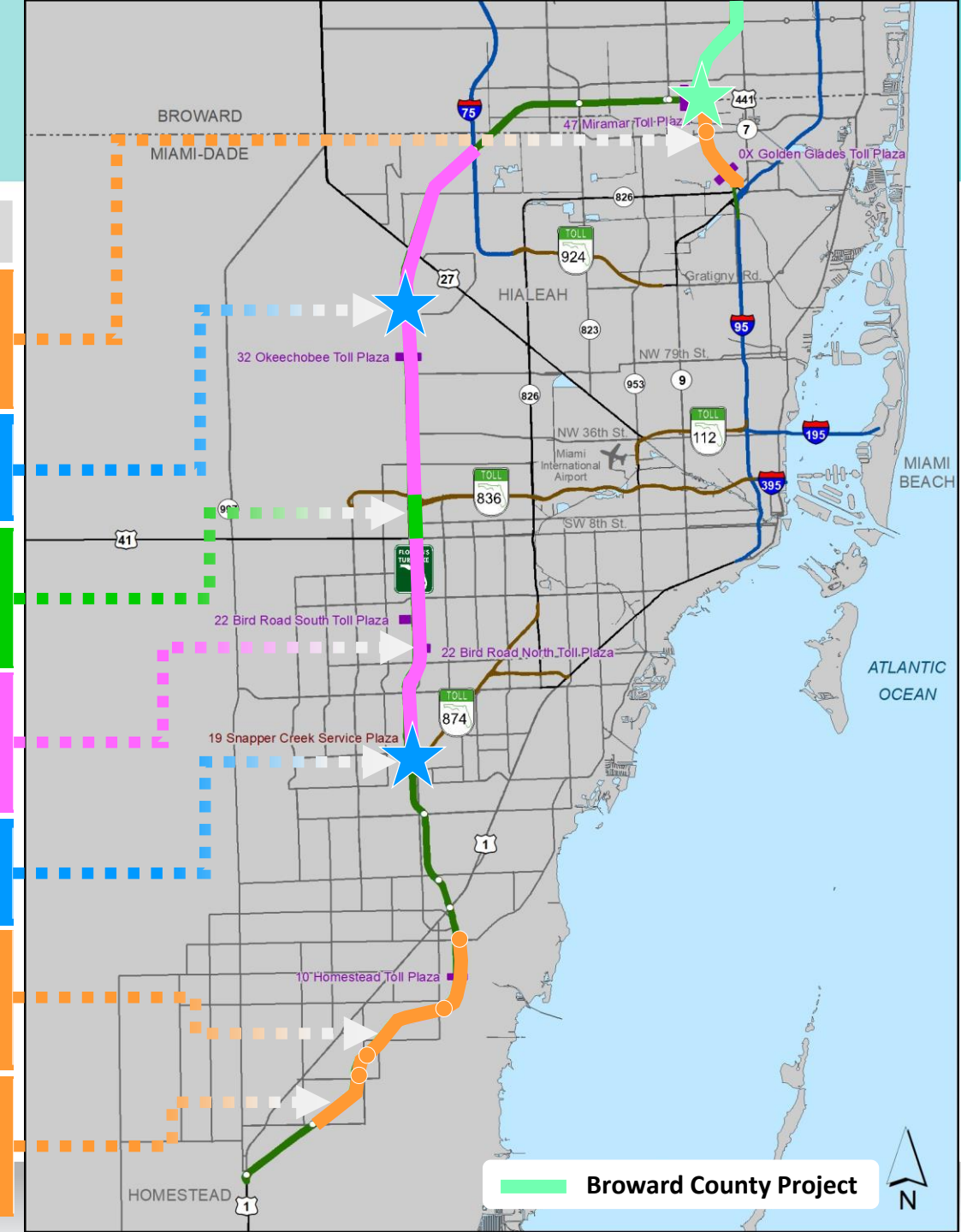
Total ≈ \$788M





# Unfunded Projects

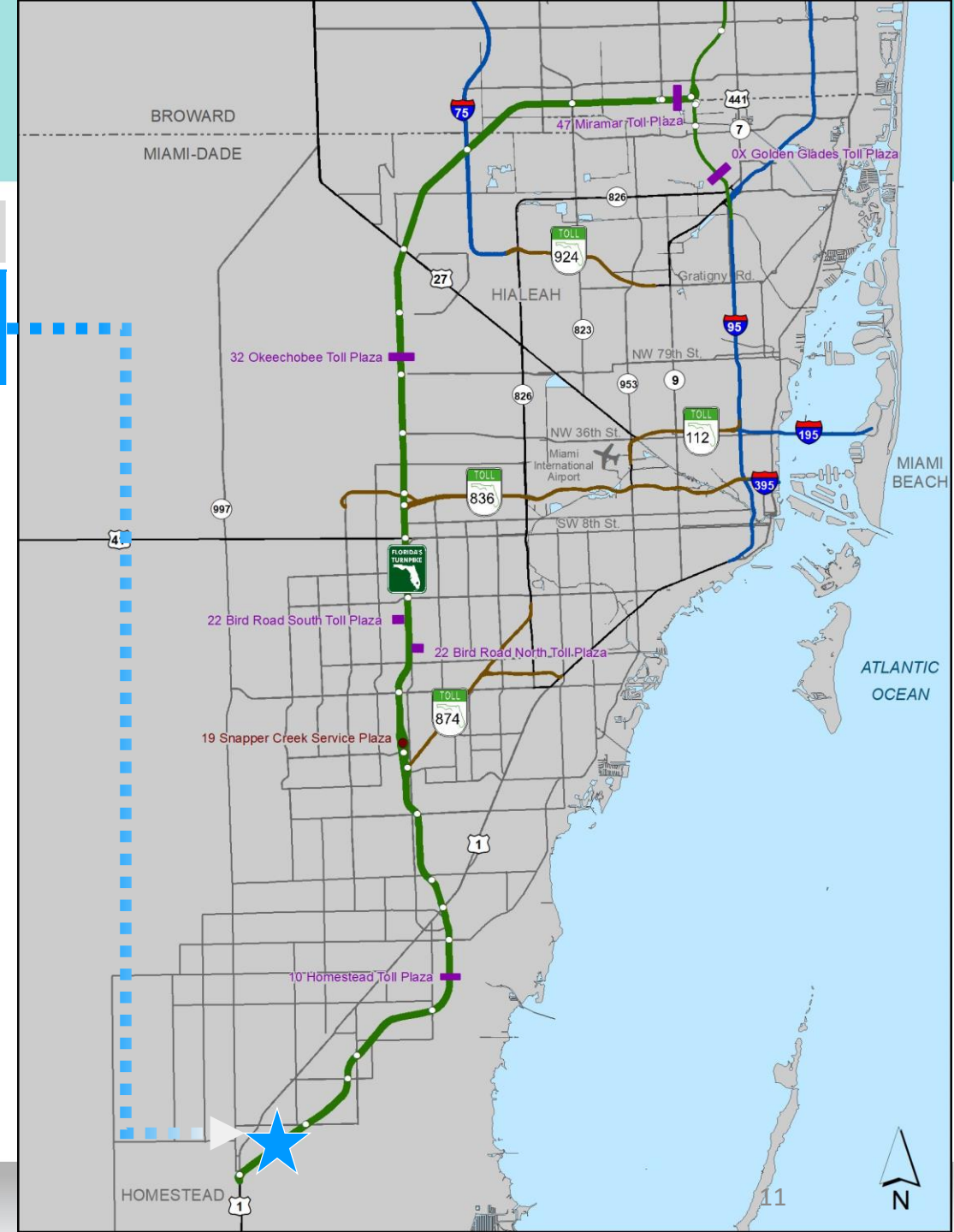
Facility	Description	Phase	FY
SR 91	Widen between MP 0X - Golden Glades / I-95 / SR 826 and MP 47 - Turnpike Ext / SR 821	PDE	Complete
SR 821	Interchange improvements at MP 34 - NW 106 <sup>th</sup> St	NA	NA
SR 821	Auxiliary lanes between MP 25 - SW 8 <sup>th</sup> St / Tamiami Trl and MP 27 - NW 12 <sup>th</sup> St	NA	NA
SR 821	TSM&O between MP 17 - Don Shula Expwy / SR 874 and MP 39 - I-75	NA	NA
SR 821	Interchange improvements at MP 19 - SW 120 <sup>th</sup> St	NA	NA
SR 821	Widen between MP 5 - SW 288 <sup>th</sup> St / Biscayne Dr and MP 11 - SW 216 <sup>th</sup> St	PDE	Complete
SR 821	Widen between MP 2 - SW 312 <sup>th</sup> St / Campbell Dr and MP 5 - SW 288 <sup>th</sup> St / Biscayne Dr	PDE	Complete





# Projects Proposed / Funded by Others

Facility	Description	Phase	FY
SR 821	New interchange at MP 1 - SW 328th St / Lucy St	NA	NA





# Questions

