

L RTP



2

4

5

MARCH 27, 2018
STEERING COMMITTEE

KICK OFF
MEETING

Agenda



1. Introduction
2. 2045 LRTP Schedule
3. Plan Update Process
 - Agency Coordination
 - Federal Legislation
 - New Elements of LRTP Process
 - Performance Management
4. Steering Committee Meeting Schedule
5. Next Steps

1

2

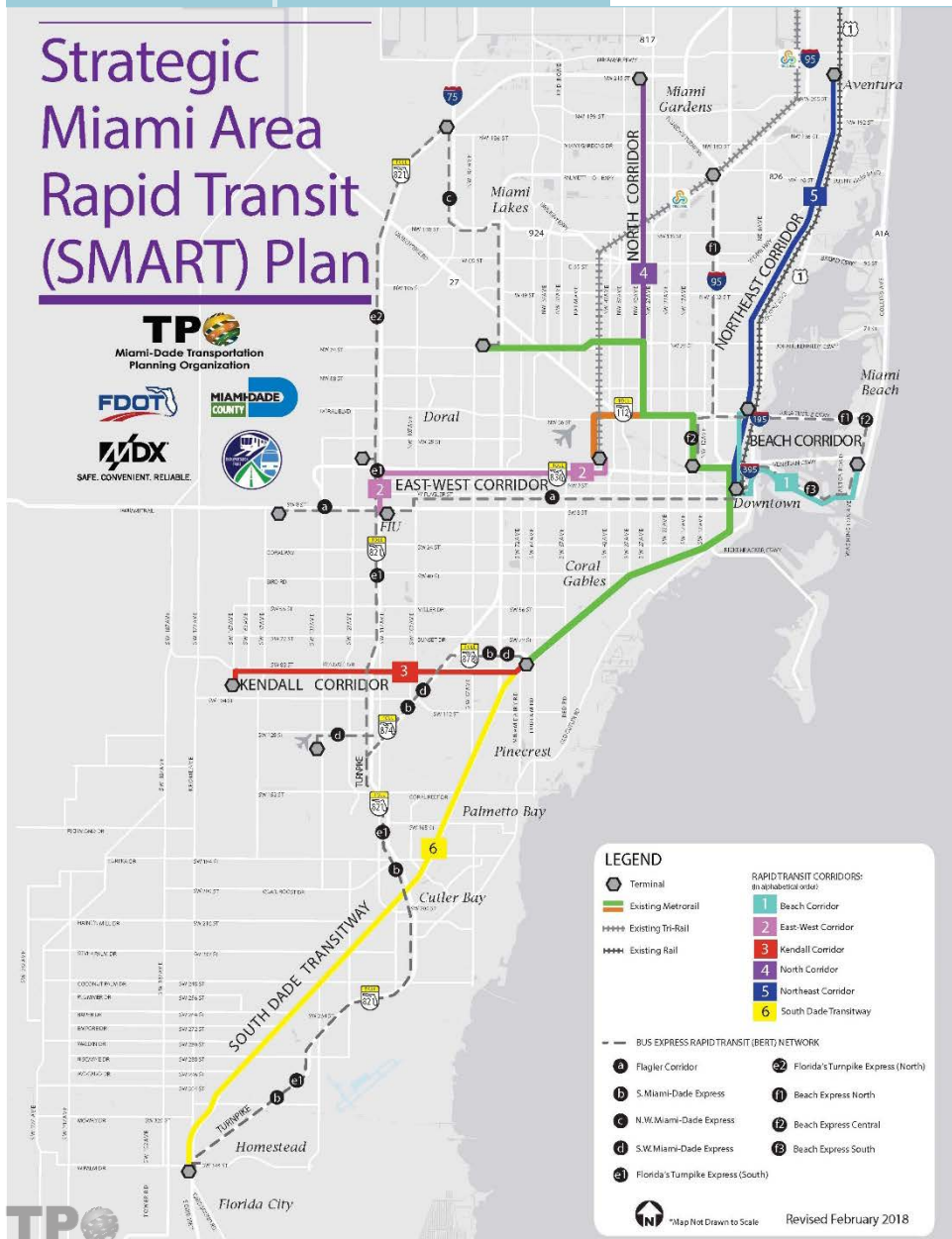


4

5

Introductions

Strategic Miami Area Rapid Transit (SMART) Plan



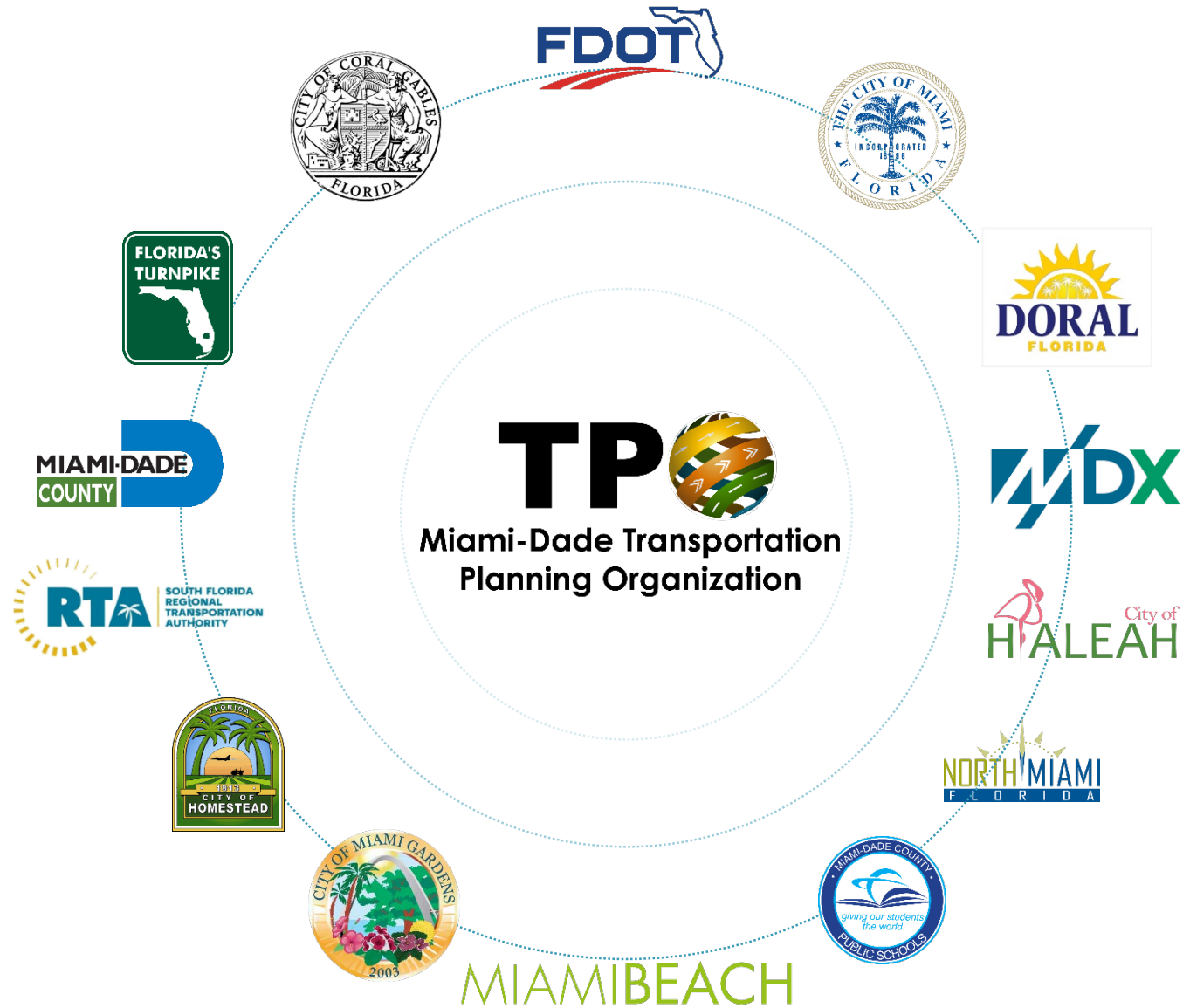
Strategic Miami Area Rapid Transit SMART_{PLAN}

6 rapid transit corridors

9 bus express rapid transit (BERT) connections

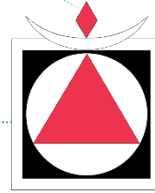
1 world class transit system

VIDEO





CLEVER°FRANKE



***Gannett
Fleming***



DOVER, KOHL & PARTNERS
town planning



2

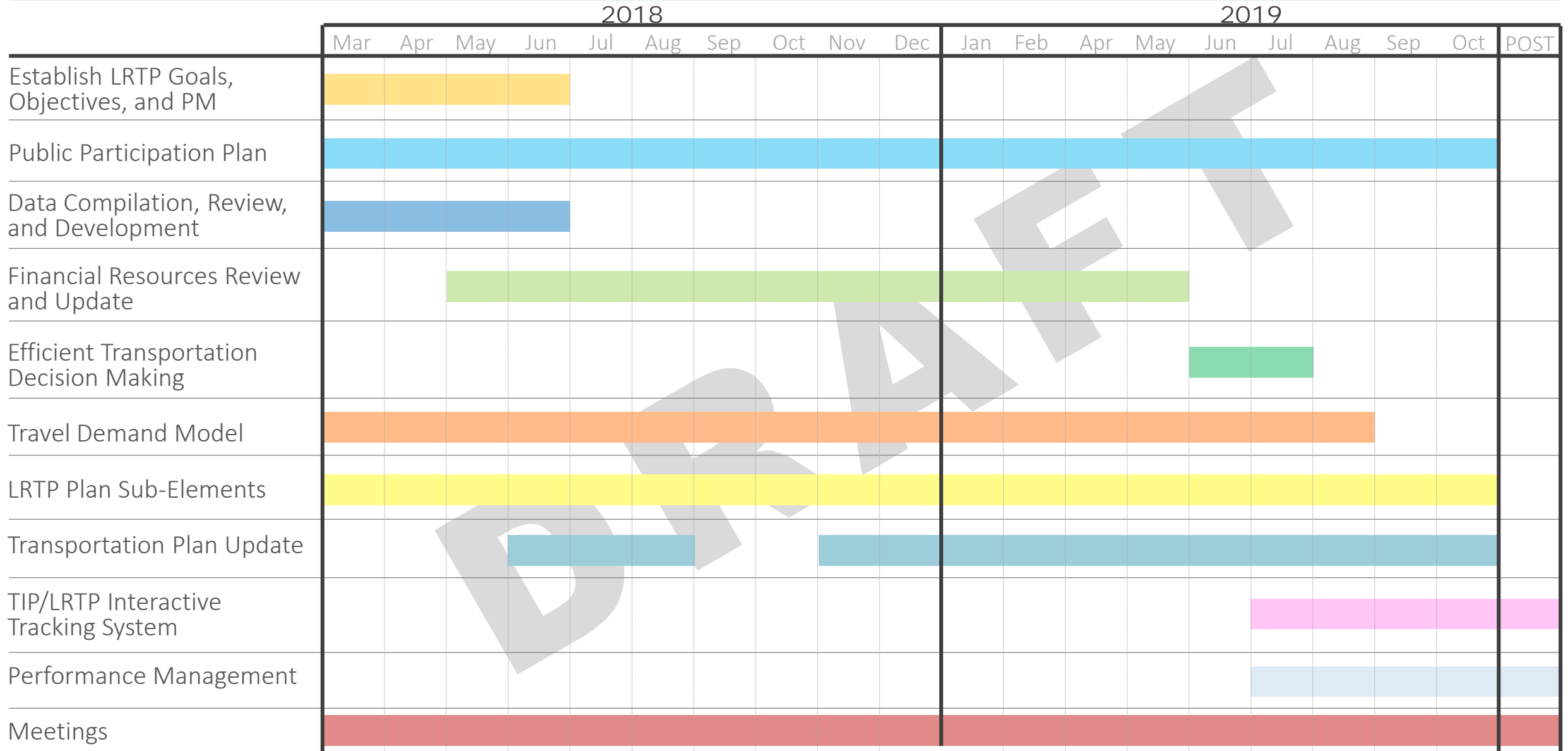
2



2045 LRTP SCHEDULE

4

5



3

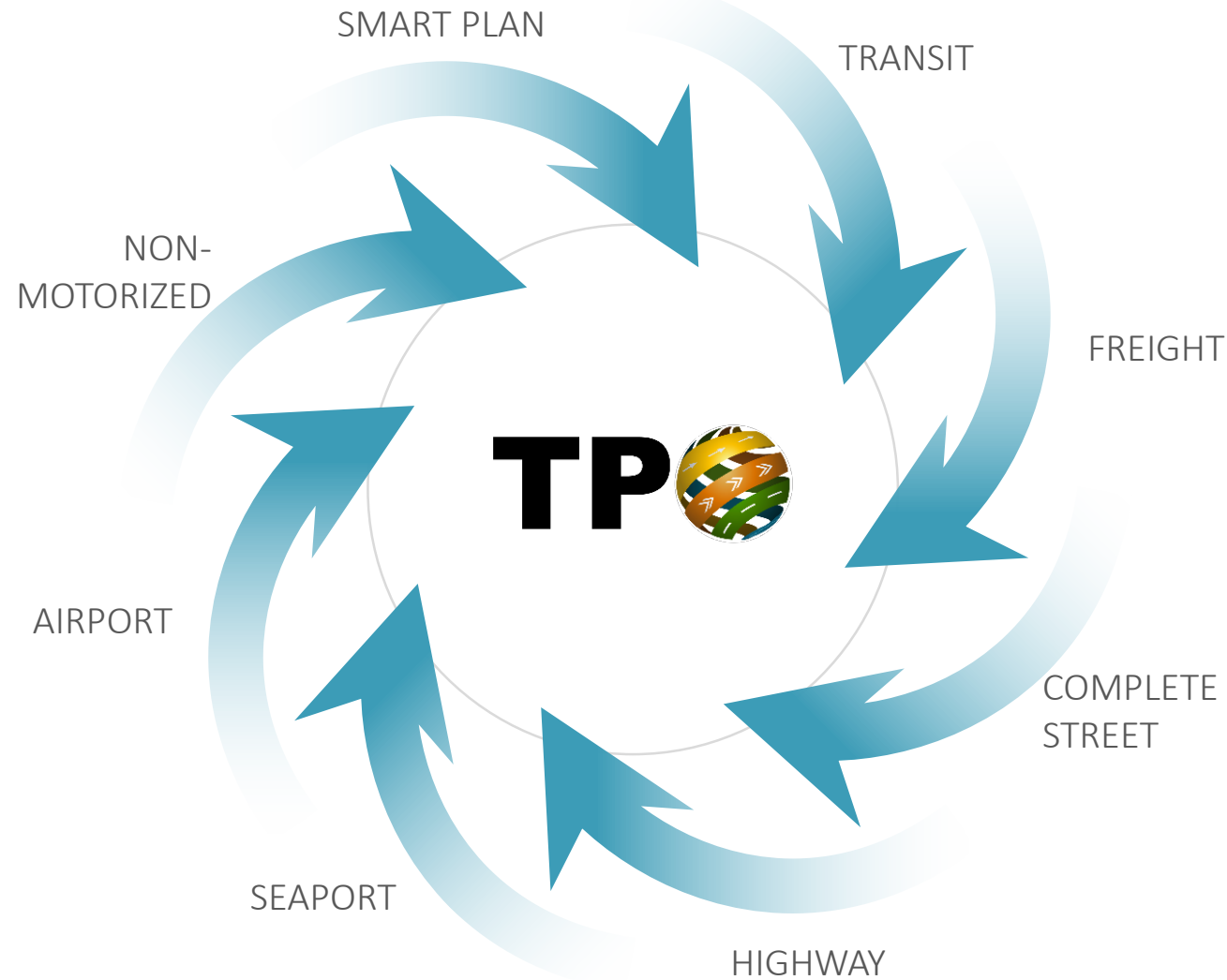
2



Plan Update PROCESS

4

5



FAST ACT

Fixing America's Surface Transportation (FAST) Act



Intercity Bus
and
Commuter
Van Pools



Interested Parties
Public ports and
additional transportation
service providers



Planning Officials
Tourism
Reducing potential risks of natural disasters



Further Emphasized/Defined Performance Based
Planning



Federal Planning Factors – (23 CFR Part 450.306)

“shall consider” as related to the 20 year forecast period



1. Support the economic vitality of the metropolitan area, especially by enabling global competitiveness, productivity, and efficiency;
2. Increase the safety of the transportation system for motorized and non-motorized users;
3. Increase the security of the transportation system for motorized and non-motorized users;
4. Increase accessibility and mobility of people and freight;
5. Protect and enhance the environment, promote energy conservation, improve the quality of life, and promote consistency between transportation improvements and State and local planned growth and economic development patterns;

6. Enhance the integration and connectivity of the transportation system, across and between modes, for people and freight;

7. Promote efficient system management and operation;

8. Emphasize the preservation of the existing transportation system;

9. Improve the resiliency and reliability of the transportation system and reduce or mitigate stormwater impacts of surface transportation; and

10. Enhance travel and tourism



National Goals

1

Safety

2

Infrastructure
Condition

3

Congestion
Reduction

4

System
Reliability

5

Freight Movement
and Economic Vitality

6

Environmental
Sustainability

7

Reduced Project
Delivery Delays

L RTPs must include:

- Description of performance measures and performance targets used in assessing the performance of the transportation system in the LRTP in accordance with the National Goals
- System Performance Report – evaluates the condition and performance of the transportation system with respect to the performance targets, and progress achieved in meeting the performance targets in comparison with the system performance recorded in previous reports, including the baseline data.

Three new National Performance Management Measures (Rule Makings)



Highway Safety Improvement Program



Assessing Pavement Condition for the National Highway Performance Program and Bridge Condition for the National Highway Performance Program



Assessing Performance of the National Highway System, Freight Movement on the Interstate System, and Congestion Mitigation and Air Quality Improvement Program

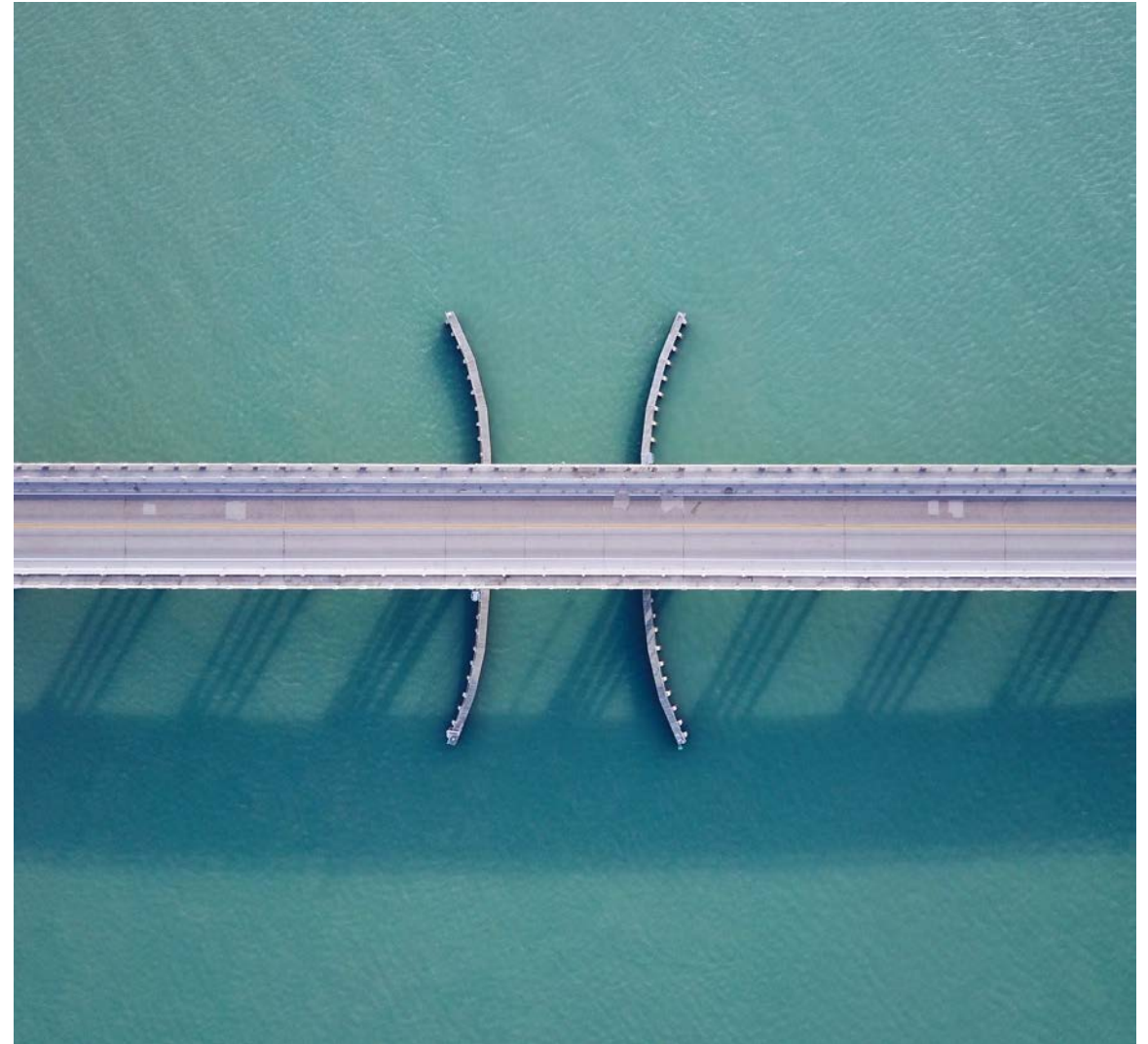
Highway Safety Improvement Program

- Number of Fatalities
- Fatality Rate per 100 million Vehicles Miles Traveled (VMT)
- Number of Serious Injuries
- Serious Injury Rate per 100 million Vehicle Miles Traveled (VMT)
- Number of Combined Non-Motorized Fatalities and Serious Injuries



Assessing Pavement Condition for the National Highway Performance Program and Bridge Condition for the National Highway Performance Program

- % of Interstate System Pavement in Good Condition
- % of Interstate System Pavement in Poor Condition
- % of Non-Interstate NHS Pavement in Good Condition
- % of Non-Interstate NHS Pavement in Poor Condition
- % of NHS Bridge Deck Area in Good Condition
- % of NHS Bridge Deck Area in Poor Condition



Assessing Performance of the National Highway System, Freight Movement on the Interstate System, and Congestion Mitigation and Air Quality Improvement Program

- **% Person-Miles Traveled on the Interstate that are Reliable**
- **% Person-Miles Traveled on the Non-Interstate NHS that are Reliable**
- % Change in Tailpipe CO₂ (greenhouse gas) Emissions on the NHS Compared to the Calendar Year 2017 Level
- **Truck Travel Time Reliability (TTTR) Index**
- Annual Hours of Peak Hour Excessive Delay Per Capita
- % Non-SOV Travel
- Total Emissions Reduction



Federal Performance Area	Federal Performance Measure	Performance Measures Applies To	Effective Date of Rule	Date when State DOTs must set Targets	Date when MPOs must set Targets
Safety (PM 1)	1. No. of Fatalities	All public roads	April 14, 2016 (effective date)	By August 31, 2017 as part of the State's annual submission of its HSIP	February 27, 2018 (180 days after FDOT establishes its target)
	2. Fatality Rate per 100 million VMT	All public roads			
	3. No. of Serious Injuries	All public roads			
	4. Serious Injury Rate per 100 million VMT	All public roads			
	5. No. of Combined Non-Motorized Fatalities and Serious Injuries	All public roads			
Infrastructure (PM 2)	1. % of Interstate System Pavement in Good Condition	Interstate System	May 20, 2017 (revised effective date)	May 20, 2018 (1 year after effective date)	November 16, 2018 (180 days after FDOT establishes its target)
	2. % of Interstate System Pavement in Poor Condition	Interstate System			
	3. % of Non-Interstate NHS Pavement in Good Condition	Non-Interstate NHS System			
	4. % of Non-Interstate NHS Pavement in Poor Condition	Non-Interstate NHS			
	5. % of NHS Bridge Deck Area in Good Condition	NHS			
	6. % of NHS Bridge Deck Area in Poor Condition	NHS			
System Performance (PM 3)	1. % Person-Miles Traveled on the Interstate that are Reliable	Interstate System	May 20, 2017 (revised effective date)	May 20, 2018 (1 year after effective date)	November 16, 2018 (180 days after FDOT establishes its target)
	2. % Person-Miles Traveled on the Non-Interstate NHS that are Reliable	Non-Interstate NHS System			
	3. % Change in Tailpipe CO ₂ (greenhouse gas) Emissions on the NHS Compared to the Calendar Year 2017 Level	NHS	September 28, 2017 Oct. 5, 2017 – FHWA published a proposed		

Federal Performance Area	Federal Performance Measure	Performance Measures Applies To	Effective Date of Rule	Date when State DOTs must set Targets	Date when MPOs must set Targets
			rulemaking (NPRM) to repeal the CO ₂ Emissions measure		
	4. Truck Travel Time Reliability (TTTR) Index	Interstate System	May 20, 2017 (revised effective date)		
	5. Annual Hours of Peak Hour Excessive Delay Per Capita	The NHS in urbanized areas with a population over 1 million for the first performance period and in urbanized areas with a population over 200,000 for the second and all other performance periods that are also in nonattainment or maintenance areas for ozone (O ₃), carbon monoxide (CO), or particulate matter (PM ₁₀ and PM _{2.5}).			
	6. % Non-SOV Travel	The NHS in urbanized areas with a population over 1 million for the first performance period and in urbanized areas with a population over 200,000 for the second and all other performance periods that are also in nonattainment or maintenance areas for ozone (O ₃), carbon monoxide (CO), or particulate matter (PM ₁₀ and PM _{2.5}).			
	7. Total Emissions Reduction	All projects financed with CMAQ funds in areas designated as nonattainment or maintenance for ozone (O ₃), carbon monoxide (CO), or particulate matter (PM ₁₀ and PM _{2.5})			

4

2



STEERING COMMITTEE MEETING

SCHEDULE

4

5

TWO MEETINGS PER MONTH

Month	1 st Monthly Meeting	2 nd Monthly Meeting
April	6 th	20 th
May	11 th	25 th
June	8 th	22 nd
July	6 th	20 th
August	10 th	24 th
September	7 th	21 st
October	12 th	26 th
November	2 nd	16 th
December	7 th	21 st

5

2



NEXT STEPS

4

5

Next Meeting:

April 20th

2015 SE Data
Goals and Objectives